

MEDICAL DIRECTORY 2003/04

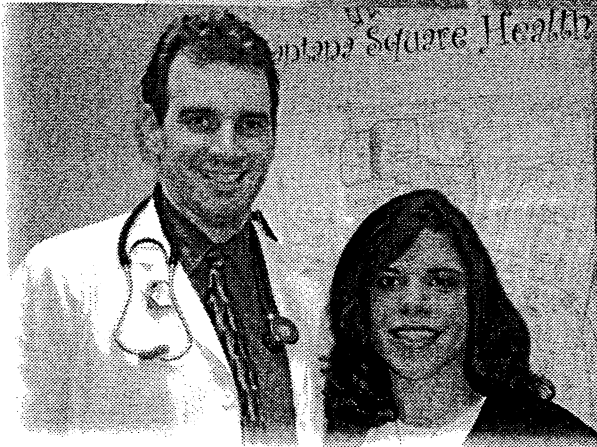


A LOCAL GUIDE TO SERVICES IN THE
HEALTHCARE INDUSTRY

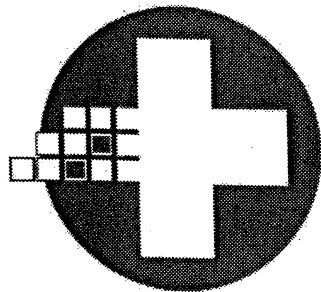
PROVIDED BY THE SPECIAL SECTIONS
MARKETING DEPARTMENT OF
COMMUNITY PUBLICATIONS, INC.

"While we wish everyone in our community a safe and healthy school year

and fall season, remember that we are here when you need us... just walk in."



-Dr. Vincent & Nasia Schaller



HOCKESSIN WALK-IN MEDICAL CARE

Lantana Square
Shopping Center
Hockessin, DE

Mon-Sat 12 noon-8pm
Sun 12 noon-5pm

www.walkinmed.com
1.302.234.4000

On April 7, 2003, Dr. Vincent and Nasia Schaller opened the doors of Hockessin Walk-In Medical Care in Hockessin, DE. Located in the Lantana Square Shopping Center, Hockessin Walk-In Medical Care provides state of the art, immediate medical care for people of all ages. The medical center provides on site x-rays, EKG's, cardiac telemetry, respiratory treatments, stat labs, suturing, etc. Conveniently open everyday including weekends and holidays, Hockessin Walk-In Medical Care is here to address the medical needs of the surrounding communities of Hockessin, Greenville, Mill Creek, as well as Avondale, Chadds Ford, and Kennett Square.

When patients enter the medical center, they find themselves in a clean and bright waiting room complete with a children's toy area. The friendly front office staff greets patients in a timely and efficient manner. Vincent Schaller, M.D. is a board certified physician with over ten years of experience, including in-patient and out-patient medicine, as well as ER, pediatrics, and gynecology. His careful and complete examinations combined with his friendly bedside manner have earned him the respect of both doctors and patients in Delaware, New Jersey, and Pennsylvania. Caring and knowledgeable nurses and radiology technicians aid Dr. Schaller in assessing and treating patients. After Dr. Schaller sees a patient, his staff immediately faxes a full report to the patient's primary care physician, thus ensuring each patient a continuity of care. Patients also have the convenience of a splinting and casting room with a wide variety of orthopedic supplies on site. Furthermore, if necessary, Hockessin Walk-In Medical Care will provide direct referrals to specialists, as well as direct transport to the ER or hospital of the patient's choice.

Keeping in mind people's busy schedules with work, school, and family, Vincent and Nasia Schaller have created a clean and friendly environment where excellent medical care is administered promptly. Hockessin Walk-In Medical Care is open Monday through Saturday from 12 noon to 8 pm and Sunday from 12 noon to 5 pm, and of course, no appointments are necessary.

Orthopaedic Specialist, P.A. - Dr. Andrew J. Gelman and Dr. Douglas Palma - are seeing patients for sports injuries, fractures, etc. on Wednesdays from 2pm-6pm at our Hockessin Office.